

Erasmus Centre for Data Analytics

Expert Practice *Inclusive smart cities & communities*



Associated
Centre:



Universiteit
Leiden
The Netherlands



Erasmus
University
Rotterdam





“We explore the meaning of digitization and the use of data for citizens and governance in the smart city”

Prof. Liesbet van Zoonen

Scientific director

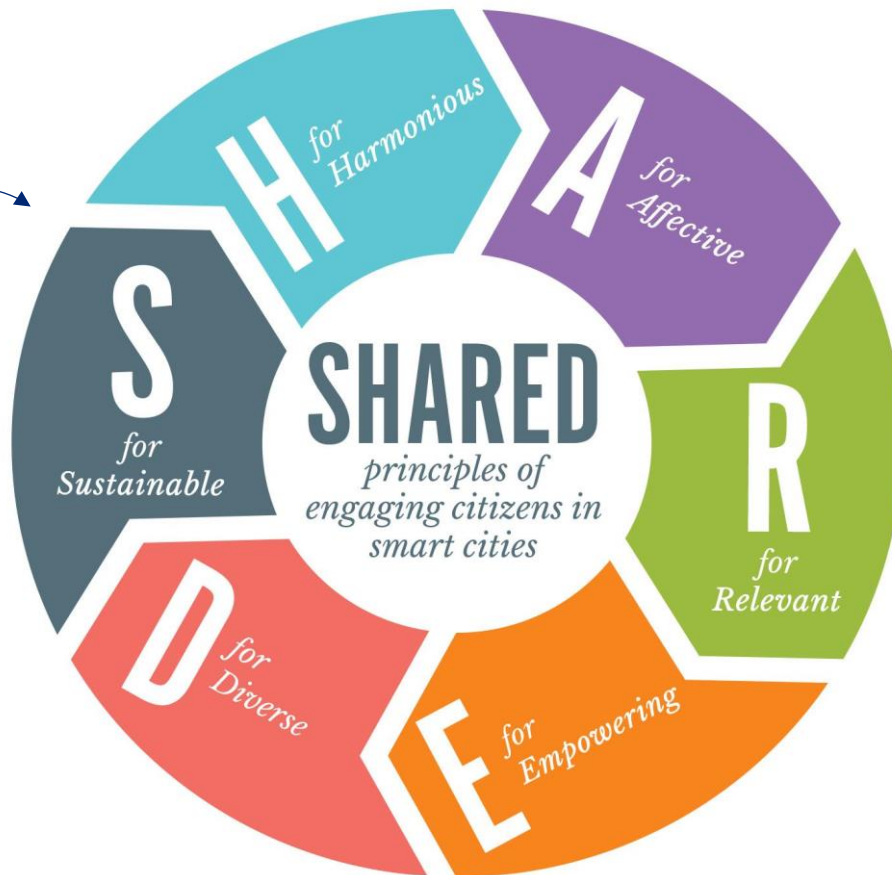
Leiden-Delft-Erasmus Centre for BOLD Cities



We focus on citizens and governance in the (smart) city.

We aim to aid researchers in developing and conducting their research in this area, and support researchers in seeking out collaboration and joint initiatives.

[Click for more info](#)



Mission // Making BOLD Cities SHARED

- For vulnerable citizens and situations (*Take care of*)
- **With** citizens and administrators (*Awareness and literacy*)
- **By** citizens and administrators (*Co-creation and reinforcement of N-duple Helix*)

How can data be used in the social and physical domain:

- Tailor-made approach for clients in the social domain
- Public space for the disabled
- Data- and disaster management
- "Smart" security in the public space

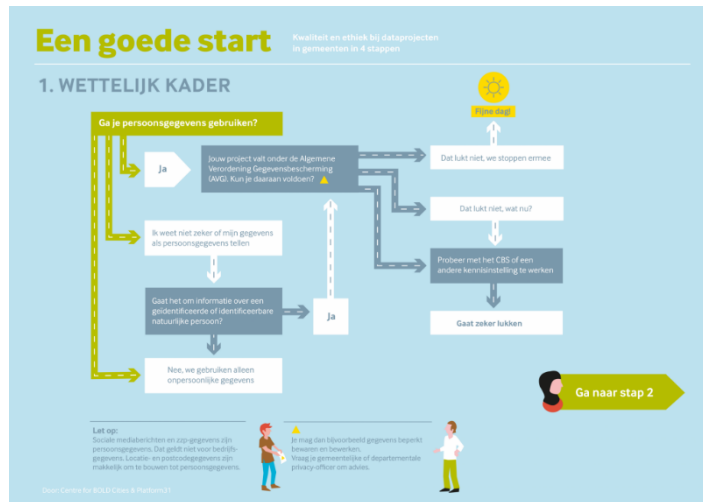
Advanced data science

Design of public space

Immediately deployable projects



Data-driven
re-integration in
Rotterdam



Quality and ethics of a
data-driven approach in the
social domain



Data dialogues

How can citizens and administrators acquire more knowledge and make better decisions about data and digital technology:

- Data literacy (e.g. in libraries)
- Data empowerment
- Democratic legitimacy

Engaging research methods

Outreach programme

Immediately deployable projects



Data Walks



Your neighbourhood, your data



Design contest

By citizens and administrators

Designing, developing and using data.

- Multi-stakeholder governance
- Living labs, hackathons
 - Digital urban identities
 - urban health labs
- Co-creation and dialogue

Critical discourse analysis

Participatory action research

Advanced data analytics

Immediately deployable projects



Data Empowerment
Design Studio



Tracing and predicting
gentrification



Social distancing
dashboard

Partners: Quadruple helix

LDE Universities

Hogeschool Rotterdam, Creating 010

CBS

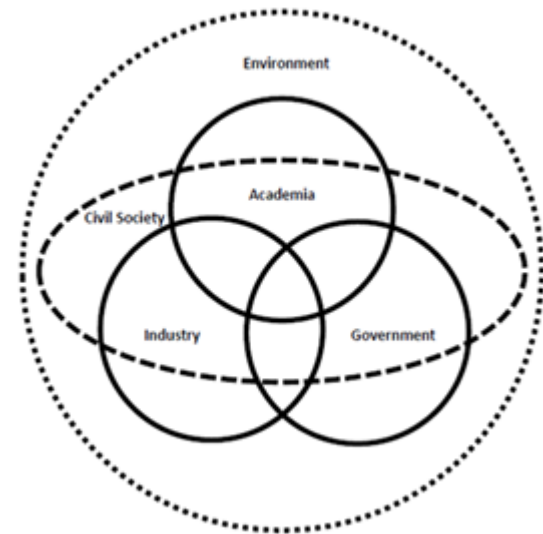
Municipality Departements in Rotterdam and The Hague

Province of South-Holland

VNG

Ministry of Internal Affairs

Local small and mid-size enterprises (SMEs) and smart city startups



Examples of recent publications (and links)

- [The Role of Multi-Stakeholder Collaboration in Building Trust in Urban Data Platforms](#) (Topic: Smarter Cities)
- [A corona app: yes or no?](#) (Topic: Mobile Applications)
- [The Use of Forums and Blogs by Dutch Teen Mothers](#) (Topic: Social Networking)
- [How big data are changing the cities](#) (Topic: Big Data)
- [Your neighbourhood, your data](#) (Topic: Smart City & Data Technology)
- [The Need for a Digital Environmental Strategy](#) (Topic: Digital Society)

Prof. Liesbet van Zoonen



vanzoonen@essb.eur.nl



www.eur.nl/data

www.centre-for-bold-cities.nl



<https://www.linkedin.com/in/>

[liesbet-van-zoonen-4955b343/](https://www.linkedin.com/in/liesbet-van-zoonen-4955b343/)

Making Smart Cities Shared!

